



# NEBRASKA CAREER AND TECHNICAL EDUCATION

## OUTCOMES & INSIGHTS 2020-2021



The majority of students in Nebraska participate in Career & Technical Education!

### SECONDARY CTE PARTICIPANTS

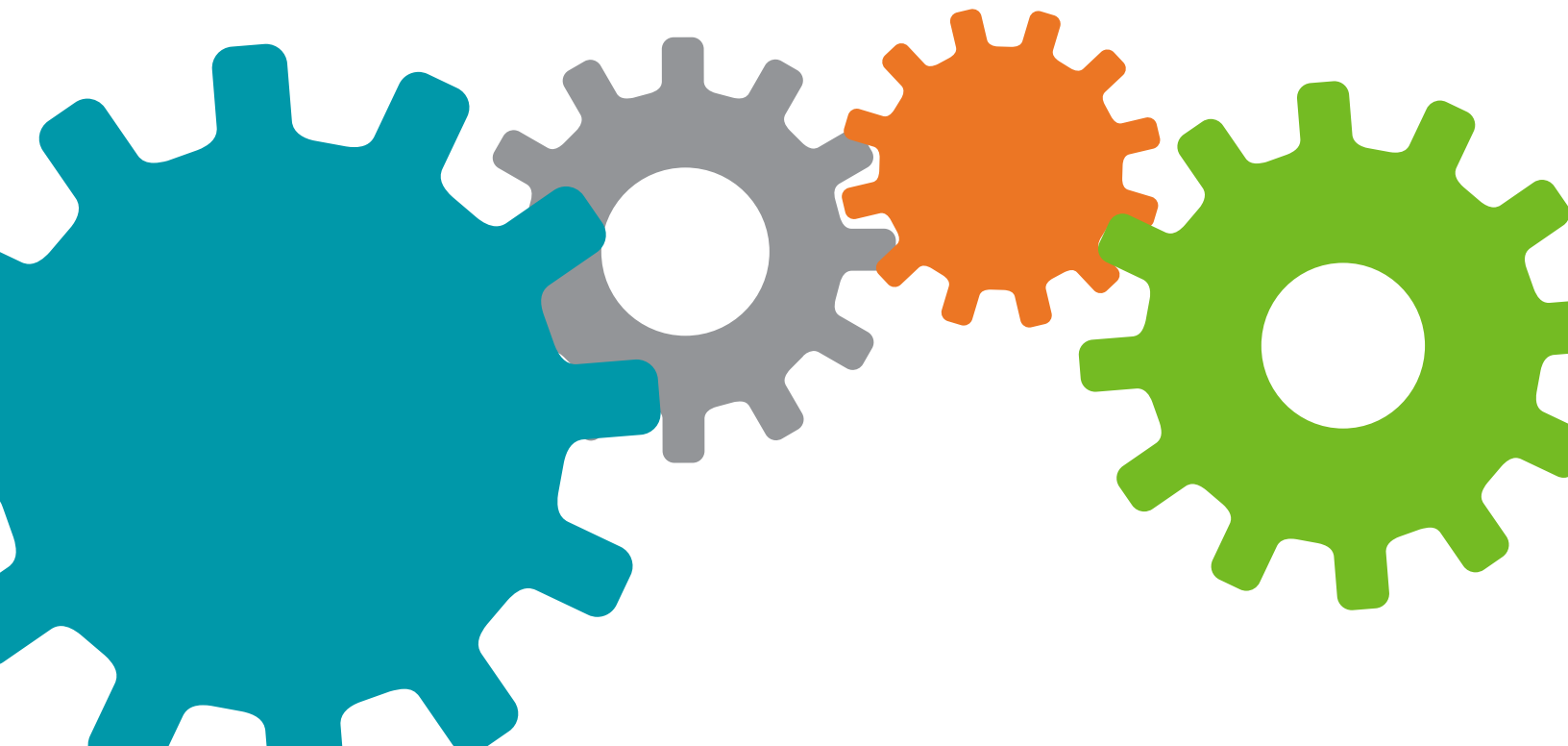
are students in grades 7–12 who have earned credit in at least one CTE course during the school year.

**114,285**  
80% of  
Nebraska students  
**participated** in CTE.

### SECONDARY CTE CONCENTRATORS

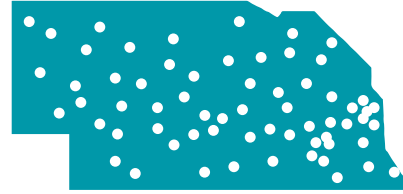
are students in grades 9–12 who have earned credit in at least two courses in a single career cluster program at the intermediate or capstone level.

**27,800**  
29% of Nebraska high  
school students were  
**CTE concentrators.**



# CTE INSTRUCTION IS AN ESSENTIAL PART OF THE DAILY CURRICULUM FOR ALL STUDENTS!

CTE courses were offered in **every public high school** in the state.

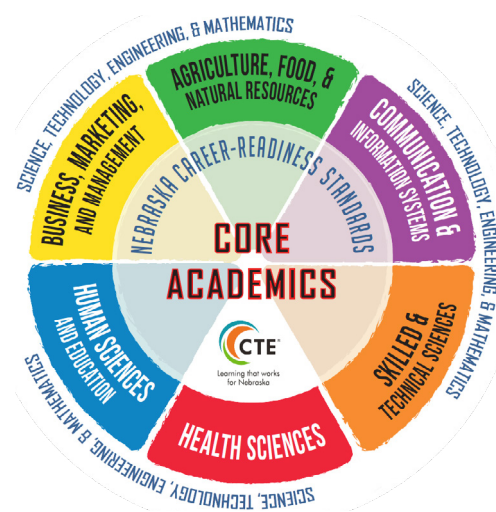


Over **20,000 students** in Nebraska gained **leadership skills** by participating in a Career & Technical Student Organization.



On average, students took **5 CTE classes** before graduation.

**99%** of Nebraska school districts offered at least one State Model Program of Study aligned with postsecondary entrance requirements and workforce demands.



CTE STUDENTS GRADUATE FROM HIGH SCHOOL AT HIGHER RATES THAN OTHER STUDENTS!

93% of Nebraska CTE concentrators graduated.

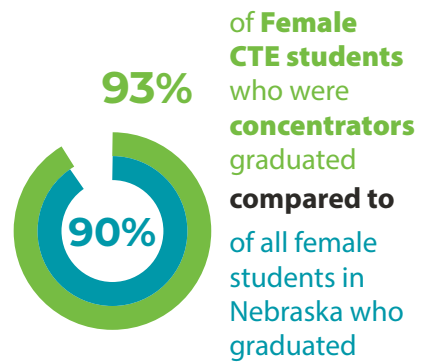
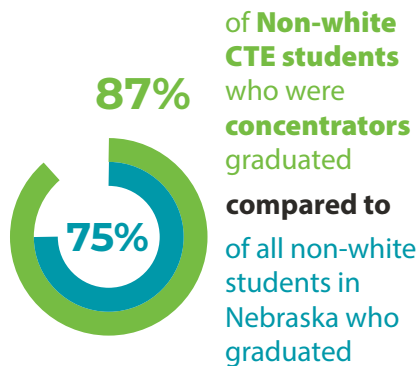
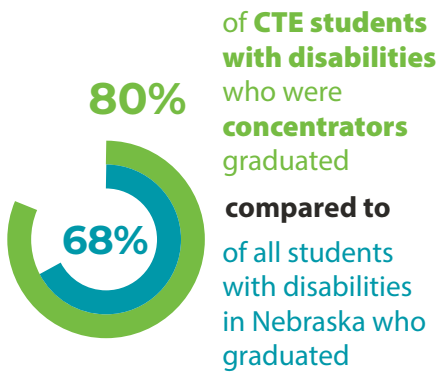


Students who concentrate in CTE are **consistently more likely** to graduate high school on time.

only 87% of all Nebraska seniors graduated.



CTE students across **all races, ethnicities, genders, and abilities** graduated at higher rates than non-CTE students.

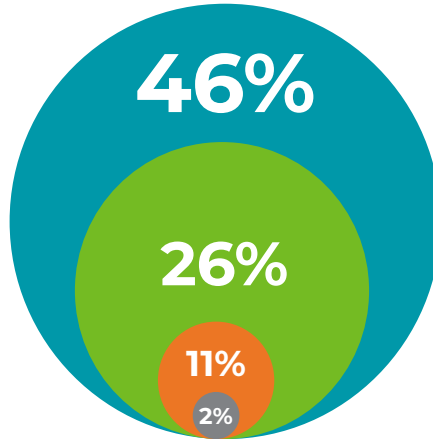


CTE concentrators are **10% more likely** to enroll in some form of postsecondary education within two years after graduation.

# CTE STUDENTS GO ON AND SUCCEED!

**88%** of CTE graduates went on to postsecondary education or advanced training, the military, or employment.

**85%** of CTE concentrators transitioned into some form of postsecondary education after graduating from high school.



**4-YEAR COLLEGE**

**2-YEAR COLLEGE**

**EMPLOYMENT**

**MILITARY**

## POSTSECONDARY CTE PARTICIPANTS

are students who have earned one or more credits in a 1.5 or 2.0 weighted course in any CTE program area.



**29,669**

Nebraska postsecondary students **participated** in CTE.

**13,768**

Nebraska postsecondary students were **CTE concentrators**.

## POSTSECONDARY CTE CONCENTRATORS

are students who have earned at least 12 academic semester credits within a single CTE program **OR** completed a short-term CTE program of less than 12 semester credits that ultimately results in an award of an industry-recognized credential, certificate, diploma, or degree.